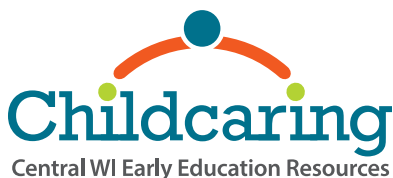




Issue #21
January, February, March 2015



Our Mission

To be the key resource of comprehensive child care services that support and enhance the quality of the early care and education system.

Wisconsin Rapids Office

1107 West Grand Avenue
Wisconsin Rapids | WI 54495

office hours:

8:30am - 4:30pm

715-423-4114

fax: 715-423-2444

Merrill Office

407 West Main Street
Merrill | WI 54452

office hours:

9:00am - 5:00pm

715-539-9779

fax: 715-539-9771

1.800.628.8534

www.childcarings.org

info@childcarings.org



The Resource Connection

Childcarings Announces New Website Design

If you have a question that involves the care of children, contact the staff at Childcarings or look to the newly designed Childcarings website (childcarings.org) as a key resource. Childcarings worked with Kinziegreen Marketing Group to design a website that incorporates the Childcarings name and logo. With the merging of Child Care Connection and Child Care Resource & Referral of Central Wisconsin, the new website also combines information from the two previous organization websites. "Childcarings is grateful to have received support for this Strategic Collaboration & Marketing Project through the Community Foundation of North Central Wisconsin. Collaborating with Kinziegreen Marketing Group was important to our success in the implementation of this project," stated Kelly Borchardt.

Like in the past, the Childcarings website includes comprehensive child care resources for families, child care providers and communities; online child care search capabilities; an updated training calendar; news/resource links; a newsletter archive and contact information for the Childcarings Board & Staff. New to the website is a Job Line section of the website to promote current child care job opportunities.

"As we worked to design the site, one of the main goals of the project was to ensure ease of navigation to visitors, we are confident we have developed a good navigation structure that accomplishes that," stated Shelley Weiler, Referral & Communication Specialist.

Because the agency was renamed, a new URL address was developed. "We continue to market childcarings.org very aggressively. If someone wants to search for care online or needs access to resources, we want them to find our website easily," stated Micki Krueger, assistant director. The website address has been put on all the new marketing and Childcarings continues to update local organizations with the information. Please add childcarings.org to your website favorites list today!

"Support for this project was provided through the North Central Health Protection Plan Fund of the Community Foundation of North Central Wisconsin."



YOUNGSTAR CORNER

Child Care Providers Choose Their 20 Week YoungStar Consultation Window

Child care providers have a choice in when they want to start their technical consultation time. Every year, child care providers who participate in YoungStar (YS) are mailed a YS renewal application approximately 120 days before their anniversary date. Applications are mailed out early, to give child care providers plenty of time to complete their application. The state has set a 20 week window of time for us to complete the technical consultation and that time starts when the YS application is received in the Childcaring office. If there is a timeframe that works best to complete your YS consultation, you can hold off on submitting your application to Childcaring until then. Renewals must be received in our office before your anniversary date in order to continue eligibility for Wisconsin Shares payments.

The Child Care Dilemma

A monthly newspaper article submitted by Kelly Borchardt, Executive Director

Like millions of other American families with young children, my daily routine was to drop off and pick up my children from child care before and after work. Parents, like me, rely on child care to earn the income we need to support our families and ensure that our children are well-cared for in a safe and caring environment. High quality child care – care that provides a safe, stable, developmentally appropriate and stimulating environment—helped my children enter school prepared to learn.

According to data gathered by Childcaring, Inc. from regulated child care programs; the cost of child care becomes more expensive than many families' housing or transportation costs and much more than the cost of food in any given month (visit childcaring.org to compare the 2014 average child care rates for the county you live in).

Child care fees are expensive because caring for a young child is labor-intensive work. Child care providers cannot lower their prices while maintaining the low child to caregiver ratios that lead to better learning environments and safer places for children. Training and education for child care providers, safe facilities, and other factors that improve the quality of child care may also increase child care fees for parents.

To make quality child care more affordable for families, the fees parents pay must be supplemented by outside investments. Child care staff are barely earning a family-sustaining wage. According to data gathered by Childcaring, Inc. from group child care centers (including for profit and non-profit programs) the average wages of a child care teacher are as follows: Assistant Teacher \$8.46; Teacher \$10.26; Assistant Director \$11.90; Director \$13.85.

Investments in child care infrastructure and improvement in the overall quality of care are necessary to reduce the cost of child care for all families, but especially for those earning low incomes. Wisconsin is making strides to improve the quality of care by implementing a quality rating and improvement system called YoungStar. This initiative sets a five-star rating system for child care providers based on education, learning environment, business practices and the health and well being of children. The federal Child Care and Development Block Grant was recently reauthorized and revised to improve affordability and quality as well. Efforts like this are critically important because all children deserve excellent early childhood care and education!

Childcaring Staff

Kelly Borchardt ~ Executive Director

Micki Krueger ~ Assistant Director

Linda Francis ~ Office & Financial Manager

Tonya Glamann ~ Quality Improvement Specialist

Kristine Kettleson ~ Quality Improvement Specialist

Peggy McMahon ~ Quality Improvement Specialist/
Prelicensing Specialist

Mary Olson ~ Quality Improvement Specialist

Lori Shafranski ~ Quality Improvement Specialist

Carrie Steinke ~ Quality Improvement Specialist

Kao L. Xiong ~ Quality Improvement Specialist/
Bi-Lingual

Gayle Schiszik ~ Training Coordinator/Certifier

Rachele Cherek ~ Program Coordinator

Tracy Verjinsky ~ Program Coordinator

Jessica Nass ~ Resource & Referral Specialist

Shelley Weiler ~ Referral & Communication Specialist

Sarah Akena ~ Child Physical Activity & Nutrition
Consultant/Flexible Nutrition Solutions, LLC
(Independent Contractor)

Provider Support / Advocate Groups

Adams, Clark, Marathon & Marquette County:

Contact Childcaring if interested in developing an
advocate group at 800.628.8534

Portage County:

Portage County Child Care Association

Joan Garski at 715.341.5873

Portage County Leaders

RoxAnne Forrest at 715.342.2999

Langlade County: Contact

Donna Murra at 715.350.4159

Lincoln County: Contact Dolly Tanck at 715.536.7581

Marathon County: Storyteller Network

Support Group for Asian Providers

Maichao Lor at 715.432.1958

Taylor County: Meet the 3rd Monday of month

For more information, call Kelly Emmerich at
715.748.6192

Waushara County:

Contact Krista Sobieski at 920.566.0545

Wood County:

Marshfield Area Child Care Association

Krisann Mauritz at 715.387.2218

Wisconsin Rapids Child Care Advocates Council
Beth Knuth at 715.423.5312

Training Opportunities

Visit our online training calendar for the most up-to-date training opportunities.

Stewards of Children, Darkness to Light with Mandated Reporter Training

Stewards of Children is a sexual abuse prevention training program that educates adults to prevent, recognize, and react responsibly to child sexual abuse. This training meets the requirement for bi-annual child abuse and neglect.

- **Tuesday, January 6 (6:00pm-9:00pm)**
Childcaring, Wisconsin Rapids
\$15 / Register by Friday, January 2

Developmentally Appropriate Practice

Best practice in early care and education is based on knowledge of how children develop and learn in the early years. DAP is about what you do with that knowledge and how you do it.

- **Thursday, January 15 (6:00pm-9:00pm)**
Mid-State Technical College, Stevens Point
\$15 / Register by Thursday, January 8

Strengthening Families with Mandated Reporter Training

The Strengthening Families initiative is a strength-based approach to preventing child abuse and neglect. This training meets the requirement for bi-annual child abuse and neglect.

- **Tuesday, January 20 (6:00pm-9:00pm)**
Streitel Conference Center at
Saint Joseph's Hospital, Marshfield
\$15 / Register by Tuesday, January 13

Curriculum, Observation, and Assessment

Participants will learn the principals of quality curriculum and assessment and how child portfolios guide curriculum planning and celebrate learning.

- **Monday, January 26 (6:00pm-9:00pm)**
Trinity Lutheran Church, Stevens Point
\$15 / Register by Monday, January 19

Environment Rating Scales

Learn about how the Environment Rating Scales are designed to assess quality in early childhood programs.

- **Monday, February 2 (6:00pm-9:00pm)**
Childcaring, Wisconsin Rapids
\$15 / Register by Monday, January 26
- **Monday, February 16 (6:00pm-9:00pm)**
7C's, Greenwood
\$15 / Register by Monday, February 9
- **Monday, March 2 (6:00pm-9:00pm)**
Lincoln County Health Department (Clinic Room), Merrill
\$15 / Register by Monday, February 23

WMELS:

A unique opportunity to understand and implement the WMELS into your early childhood setting.

- **Mondays, February 9, 23 & March 9 (5:00pm-9:30pm)**
Northcentral Technical College, Wausau
\$40 / Register by Monday, February 2

WMELS Next Steps

(Must have previously attended a full WMELS training)
Learn how the Wisconsin Model Early Learning Standards support intentional planning and teaching practices.

- **Monday, February 9 (6:00pm-9:00pm)**
Childcaring, Wisconsin Rapids
\$15 / Register by Monday, February 2
- **Tuesday, February 10 (6:00pm-9:00pm)**
Ministry Medical Group, Stevens Point
\$15 / Register by Tuesday, February 3

Supporting Language & Early Literacy: Providing Effective "Read Alouds":

Learn about providing effective "read alouds" and evidence-based approaches to support language and early literacy.

- **Thursday, February 12 (6:00pm-9:00pm)**
TB Scott Library, Merrill
\$15 / Register by Thursday, February 5

Pyramid Model for Social Emotional Competence:

The Pyramid Model Training Series is a model for supporting social competence and preventing challenging behavior in young children birth to age 5.

- **Mondays (6:00-9:00pm), February 2, March 2, April 6, & May 4**
Saturdays (8:30am-3:30pm), February 21, March 28
Edgar High School, Edgar
\$50 / Register by Monday, January 26
- **Saturdays (8:30am-3:30pm), February 28 & April 11**
Mondays (6:00-9:00pm) March 16, March 30, April 20 & April 27
Little Sprouts Discovery Center, Redgranite
\$50 / Register by Friday, February 20

Germs, Worms, Mud & Crud (FOR HMONG SPEAKING PROVIDERS)

Participants will build a better understanding of the rationale for hand washing requirements.

- **Saturday, March 14 (9:00am-12:00pm)**
Northcentral Technical College, Wausau
\$10 / Register by Friday, March 6



*** Childcaring provides trainings that align with YoungStar quality areas ***

Childcaring Selects Winners of Training Participant Drawing

Everyone at Childcaring appreciates the time and dedication that participants put into their yearly training. Again this year, Childcaring held an end of the year training participation drawing. This drawing included the names of Childcaring training participants from 2014. This drawing is a much deserved thank you to all the child care providers who attend trainings throughout the year.



Congratulations Laurie Konkol-Glodowski and Beth West!

They will each receive: a gift card and a hard cover book entitled, *Over and Under the Snow*. We appreciate your work and dedication to remain up-to-date on the most current practices in your profession. By attending training opportunities in the child care field, you demonstrate your continued commitment to the importance of early learning and child development. Thank you to everyone who attends Childcaring trainings. As a child care professional, you have the opportunity to make a lifetime of difference in the lives of children and their families.

Your Participation in the 2014 Stakeholder Survey Helps Improve Services

Thank you to everyone who provided information and feedback on the 2014 Stakeholder survey. This year child care providers and community members chose some of the most valuable Childcaring services to be: professional development; referral services; local YoungStar services; technical support; and quality child care information.

Also, 98% of respondents would recommend Childcaring services to others.

Here are some of the comments included on the surveys:

“Childcaring has a great staff that cares about early care & education.”

“Staff is always very helpful. I enjoy trainings offered when I can attend.”

“They have been really helpful with issues and can direct me in the right direction with questions.”

Congratulations On Your Accomplishment

Thank you and congratulations to the following child care facilities that completed the Child Physical Activity and Nutrition Program.

Rudolph's Little Dears Child Care Center
Bows and Britches Child Care
Safe Haven Childcare Center, Kim Bjorklund
Sharon's Care Centre, Sharon Mras
Gesell Institute-Study Early Child
Alphabet Soup Child Care II
Wameng's Day Care, Chia Her
YWCA Child Development Center
Angie's Family Daycare, Angie Bliese
Woodson YMCA Child Development Center
Aspirus YMCA Child Development Center
Karen's Day Care, Karen Thurber



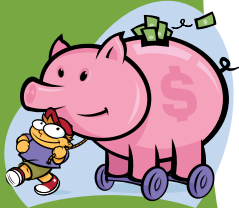
During the past several months with the guidance from a health consultant these facilities worked on nutrition and physical activity goals that they found important to their individual facilities. For more information or to participate in the CPAN program at no cost contact Sarah Agena at sarah@childcaring.org or call 1-800-628-8534.

2014 Taxes

Standard Meal Allowance Rates:

Breakfast: \$1.31
Lunch or Supper: \$2.47
Snack: \$.73

Mileage for 2014:
\$.56 per mile



Average Child Care Rates & Staff Wages in Central WI

The 2014 average group and family child care rates are available on the Childcaring website (go to: Resources for Families > Average Child Care Rates). The average staff wages are also available at www.childcaring.org (go to: Resources for Providers > Additional Information > Financial Information > Wage & Benefits Survey). If you have any questions about this information please feel free to contact us at: 1-800-628-8534.

Start with your GOAL, then find your activities.



Because I was just at a Math workshop for young children and this came up I had to share! If our goal is to help children develop number sense (WMELS B.EL. 1 Demonstrates

Understanding of Numbers and Counting as well as WMELS B.EL.2 Understands Number Operations and Relationships which lead into Wisconsin State Standards at Kindergarten of Number Operations in Base 10), doing the calendar in an early childhood setting is probably not a good choice of activities. The calendar is based on 7 and the number system we want children to learn is based on 10. (Besides, one week the number 1 is in the middle of the row and another month it could be at the end! – very confusing for young children.)

I am also reminded of going to a workshop by Bev Boz who said the research shows us that a 3-4 year old takes at least 6 months to understand the concepts of a calendar versus a 1st grader can learn it in a week – what is best use of the time we have with 3s and 4s? It might be on something other than calendar.

This article on calendar time from NAEYC (<https://www.naeyc.org/files/tyc/file/CalendarTime.pdf>) is worth reading. Using 5 and or 10 frames will get your children using mental math in a much better way! There are tons of suggestions of this on Pinterest. Remember you are going there to look with your goal in mind!

Submitted by: Beth Tepper, CESA 9

16th Annual Collaborative Leadership Forum Preserving Early Childhood (PEC) and WDEC JoLyn Beeman Memorial Lecture Series

March 18 and 19, 2015 with
March 17 environmental experiences preconference

Holiday Inn Hotel & Convention Center
1001 Amber Avenue, Stevens Point, WI 54482

Join us at the 16th Annual Collaborative Leadership Forum for inspiration, practical details, networking, and more!

Forum rate: \$150 per person. Register as a team of three for \$390. Registration costs include featured speaker's book, materials, Tuesday evening dessert, Wednesday lunch and evening buffet, and Thursday breakfast and lunch. On-line registration and more details will be available in January 2015. Registry credits provided and Viterbo University credit available for fee.

Book Nooks Available to Check Out

Book Nooks with resources that support the strategies taught in Pyramid Model for Social Emotional Competence are available for you to check out at the Wisconsin Rapids Childcaring office. Please visit our office and take advantage of these resources today!



Healthy Choices



Keep children active indoors with this quick and easy game.

Move and Stop

Play lively music to spark children's interest. In this game children should march when they hear the music, but stop when the music stops. After they have marched a bit, turn the music off and see if the children remembered to stop. Make a fun game out of marching and stopping. Children can move and stop to these actions, too: clapping, hopping, stomping, waving hands or wiggling the whole body.

Wisconsin Rapids Office

1107 West Grand Avenue | Wisconsin Rapids | WI 54495

Merrill Office

407 West Main Street | Merrill | WI 54452



Xav tau kev pab pes/txhais daim ntauw xovxwm
no thov hu tuaj rau
Kao Lai Xiong 715-539-9779
Hnub Mondays - 9:30 txog 3:30pm.

Vision

For all Central Wisconsin children to benefit from the best child care possible.

2015 Childcaring Board of Directors

Ginny Rusch, President
Brad Gast, Vice President
Nick Faber, Treasurer
Allison Machtan, Secretary

Kim Gachnang
Jane Marquardt
Sheila Michels
Lisa Montgomery
Julie Rodger
Ruth Sattler
Tammy Schreiber
Mandy Stanley
Kim Van Hoof



Childcaring Staff Attend Reflective Practice Training

Childcaring staff attended Reflective Practice: Establishing a Foundation, a training presented by Stephanie Donahue, PhD, Clinical Specialist, on behalf of Wisconsin Alliance for Infant Mental Health. The training included: Goals and Objectives of Reflective Supervision/Consultation (RSC), RSC in Child Care Environment, Benefits of Reflective Practice, an Organization Assessment to Determine If a Program is Structured to Support Relationship-Based Delivery of Services, and more. Additional information about reflective practice can be found at: www.wiaimh.org.